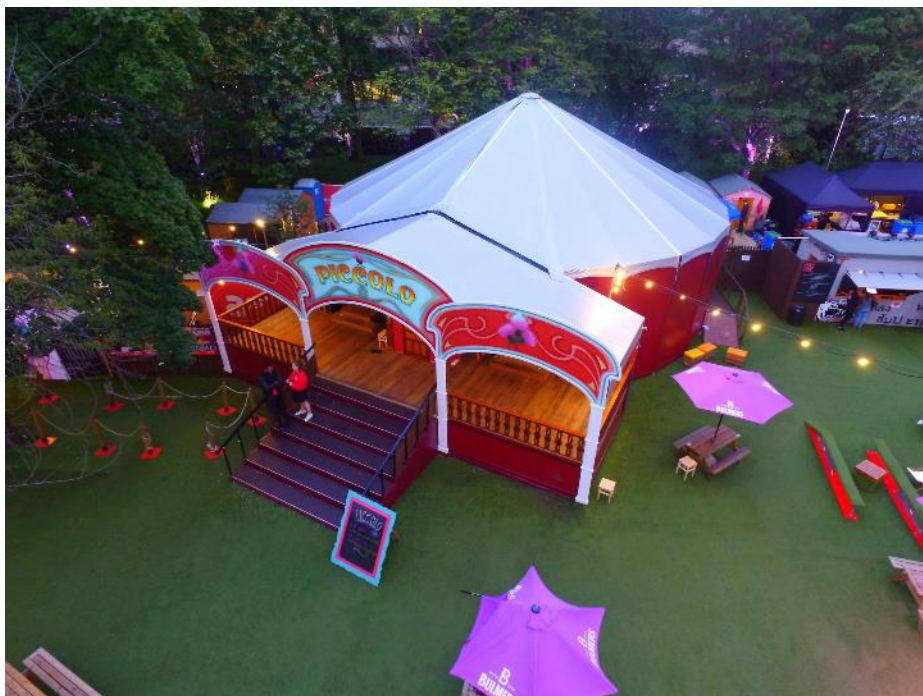




**TECHNICAL SPECIFICATIONS**  
**The Piccolo – George Square Gardens**

George Square Gardens  
EH8 9JU.



[www.assemblyfestival.com](http://www.assemblyfestival.com)

## The Piccolo - George Square Gardens Technical Specifications

### SEATING

The Piccolo is an end on theatre space with a raked auditorium with up to 200 seats.

### THE STAGE

The performance area is a semi-circular space approximately 8m wide by 6.5m deep, on the flat. As the venue is a tent the roof is slanted. It is approx. 4m high at the rear of the stage and rises sharply onstage to approx. 6m in centre stage. The performance area is wooden floor covered with black dance floor. There is a crossover available. It is not permissible to screw into the venue floors or walls. The use of confetti is permitted only if the confetti is biodegradable.

### MASKING

There is black masking at the rear of the stage, following the same curve as the tent. There is no other masking.

### SUSPENSION

There are no flying facilities. Lightweight items of scenery may be hung from the structure of the tent on single lines at the discretion of the Technical Manager.

### LIGHTING

The lighting and sound control positions are located at the centre rear of the tent; it may be possible for one person to operate.

### **We do not allow companies to bring their own lighting equipment**

CONTROL: Zero88 FLX

DIMMERS: 18 x 10Amp

POWER SUPPLY MAXIMUM LOAD 15 kW

FIXED RIG MOVING LIGHTS:

- 3 x Clay Paky K10 B-eye LED moving lights (available for hire at additional cost)
- Mirror ball and 2x pin spots for mirror ball (available for hire at additional cost)
- Hazer and Smoke Machine are also available for hire at additional cost

Additional lanterns can be rigged as company specials but must come from the stock of Assembly Festival's supplier. These units will be charged as an additional cost. Moving lights in the fixed rig are available for hire.

A good general cover of warm, cool & coloured light over the performance area is provided. There are 6x LED pars rigged as backlight in the space. The position and focus of any of these lanterns may not be changed, however they may be coloured for your show, provided this is possible within your set-up and strike time.

Absolute blackout is not possible due to emergency lighting regulations and the nature of the venue.

For the most up to date plans and technical specifications, please liaise with the Head of Lighting in the lead up to the festival. Please note these specifications are subject to change.

## **SOUND**

The lighting and sound control positions are located at the centre rear of the tent, it may be possible for one person to operate.

### **We do not allow companies to bring their own sound equipment**

System : 2 x L'Acoustics 12XT with Subs and Sidefills – plans available on request.

Monitors: 2 x floor monitors are available

FOH Desk: Yamaha QL1 16 Input Digital Console with on board processing and effects

FOH Playback 1: 1 x Dedicated computer with sound replay/cue software

FOH Playback 2: 1 x 3.5mm Jack inputs

The basic rig also includes 4 wired dynamic SM58 microphones and 4 DI boxes.

For information and costs for radio microphones please contact the Head of Sound. Additional microphones, other sound equipment and backline equipment is available for hire. This equipment is provided by Assembly Festival's supplier and will be charged as an additional cost – details on request.

All sound equipment must be agreed in advance with the Head of Sound or the Technical Manager.

## **DRESSING ROOM**

There are two shared dressing sheds (2.4 x 3M) available, these are to be situated behind the tent and will require walking outdoors to the stage. Access will be from the exit doors behind the stage. Tables, chairs and mirrors are provided for communal use. The management cannot accept responsibility for the security of any items left in the dressing room. You will have access to the storage and dressing room 40 minutes before and for 20 minutes after your performance each day.

## **STORAGE**

There is no capacity to store large items of set. Backstage storage is extremely limited (3 x 3.6M TOTAL) and is accessed by walking outdoors, and so we recommend that companies keep their scenery/props requirements to an absolute minimum. Small items of scenery and props may be stored in the dressing room at the discretion of the Technical Manager. It is not possible to provide storage space elsewhere. It is worth ensuring that your set is light yet durable enough to withstand daily dismantling.

### **ALL SET/ PROP ITEMS ARE REQUIRED TO EASILY PASS THROUGH A STANDARD DOOR**

## **ACCESS**

PICCOLO is located in: George Square Gardens, Edinburgh, EH8 9JU.

Load in and access is via the emergency exit to side of stage

The venue is on a platform in the George Square Garden's site and all set, props etc. will need to be carried into the Gardens. Load in and vehicle access is subject to restrictions – please contact the Technical Manager for further information.

Please check before attempting to bring large pieces of scenery - they may not fit through the doors.

Access to the stage is from the auditorium or a door from the outside Stage Left. There is one emergency exit to the side of stage and audience entrances/exits from the rear of the seating bank. Please note that these must be kept clear as emergency exits.

## STAFF

The theatre personnel work on a rotational basis. The duty rota comprises of one technical stage manager. If the visiting manager requires additional staff to assist with the turn around, or the use of casual crew during the load in or load out, this can be arranged at additional cost. If the venue technical staff are only required for lights up /lights down (one cue to bring the house to a performance state and mic live and then one cue to bring the house back to exit state) during the performance this is included in the venue rental charges.

Basic operation of your show (a couple of simple cues) will incur a show call charge of £10 per performance plus VAT. More complex operating (that requires rehearsal) will incur a show call charge of £25 per performance plus VAT.

## NOTES

Any additional staff or items of equipment, which the management are requested to provide, will be charged to the visiting company.

Any practical electrical equipment you wish to use should have a current PAT certificate and be cleared with us. We reserve the right to refuse the use of any equipment which is deemed unsafe.

Each company is assigned a get-in/rehearsal time prior to their first performance This is the time for you to load your set and props into the venue and for you to re-tech your show. You will also need to allow sufficient time to rehearse your daily turnaround and set storage. Please note that your slot time must include get-in and get-out time. This rehearsal can be scheduled as early as the Saturday before your first performance. The company must be able to attend rehearsals at any time from the Saturday morning onwards.

**Please note that, due to the Scottish Executive regulations, smoking is not permitted in any venues, including the use of herbal cigarettes. Only electronic cigarettes may be used.**

At the end of the festival, please arrange for removal or disposal of your set and any unused publicity material. There will be a charge applied to cover the cost of disposal should you not comply with this request.

Please note, since this is a temporary conversion and not a permanent theatre, all measurement and quantities quoted in the above specification are approximate and may be subject to change. For detailed and up to date information regarding the venue please contact the Technical Manager – [technical@assemblyfestival.com](mailto:technical@assemblyfestival.com).

