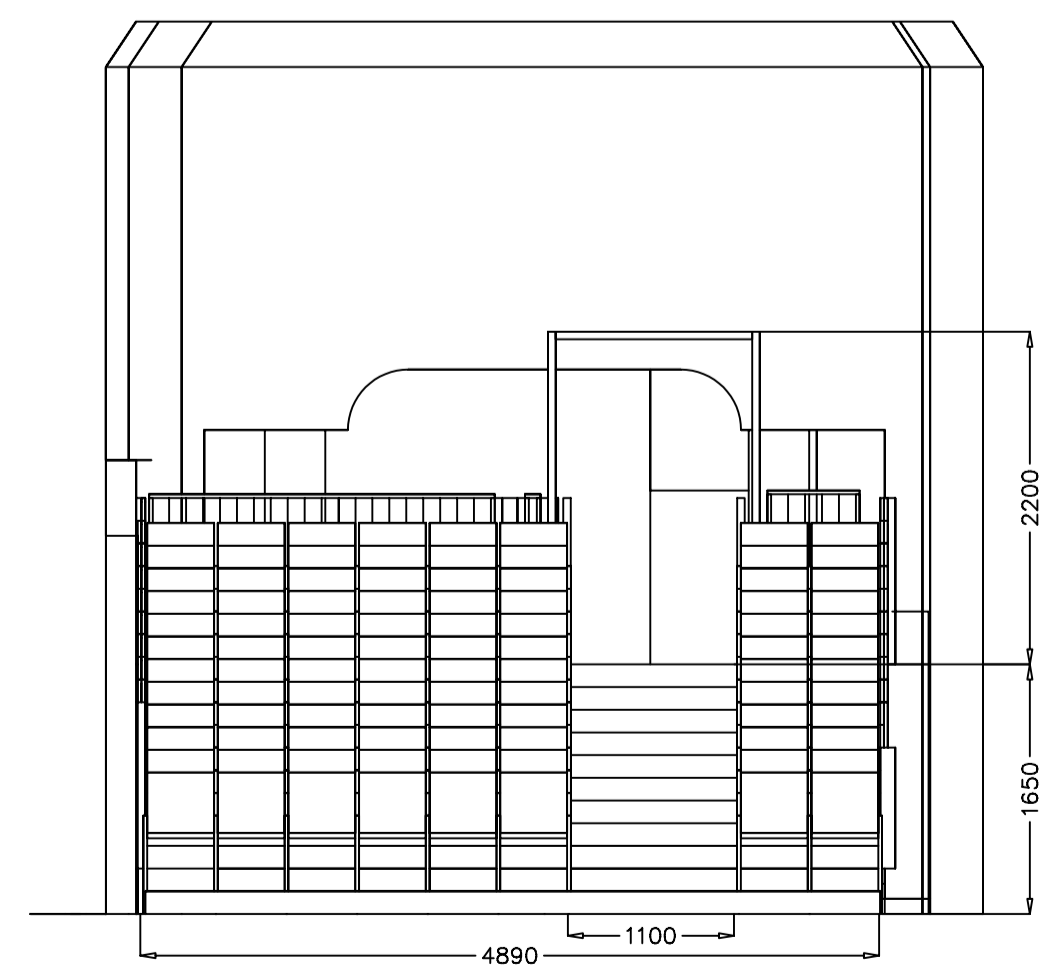


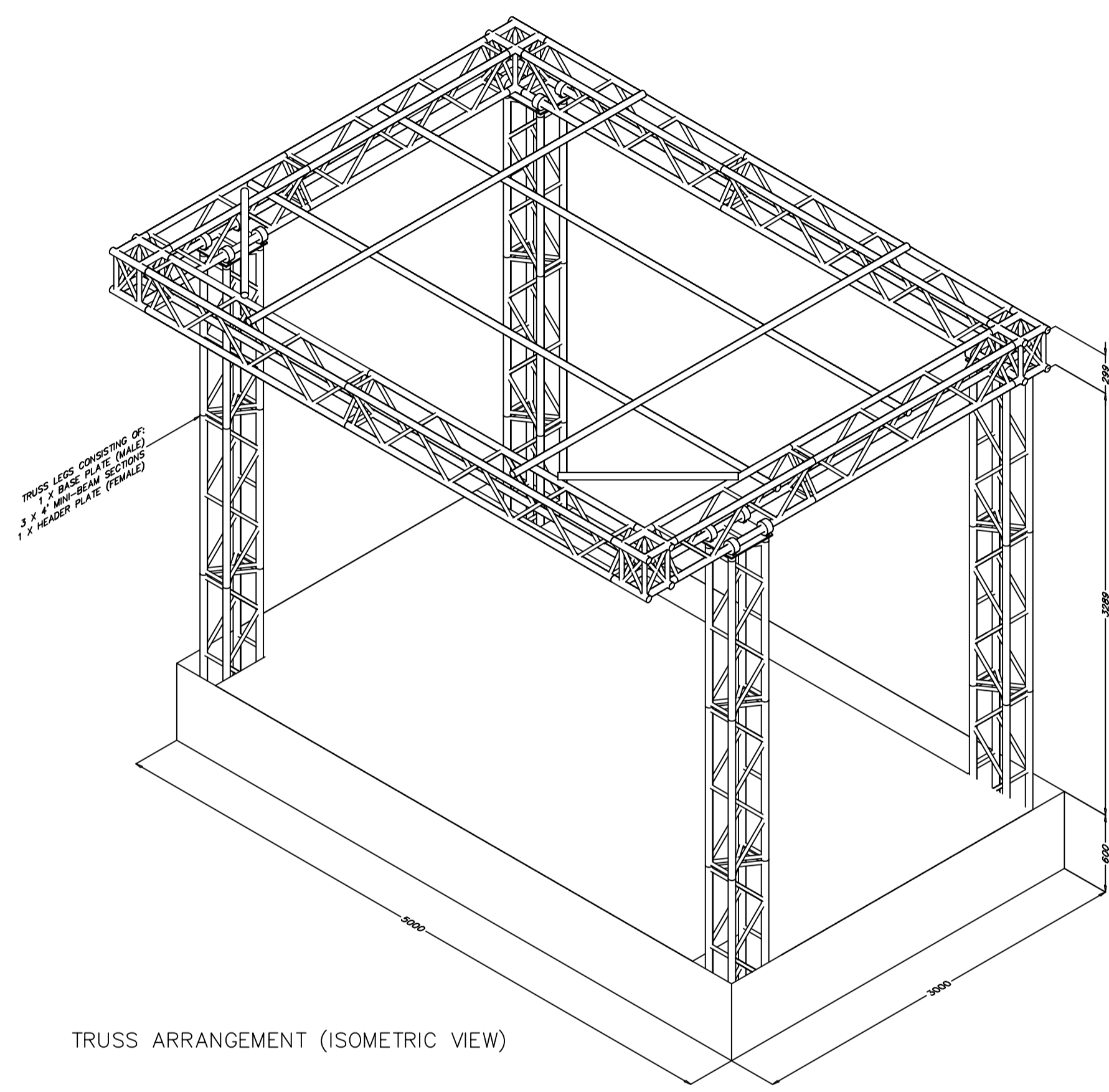
PLAN VIEW

SIDE ELEVATION (ON A-A)

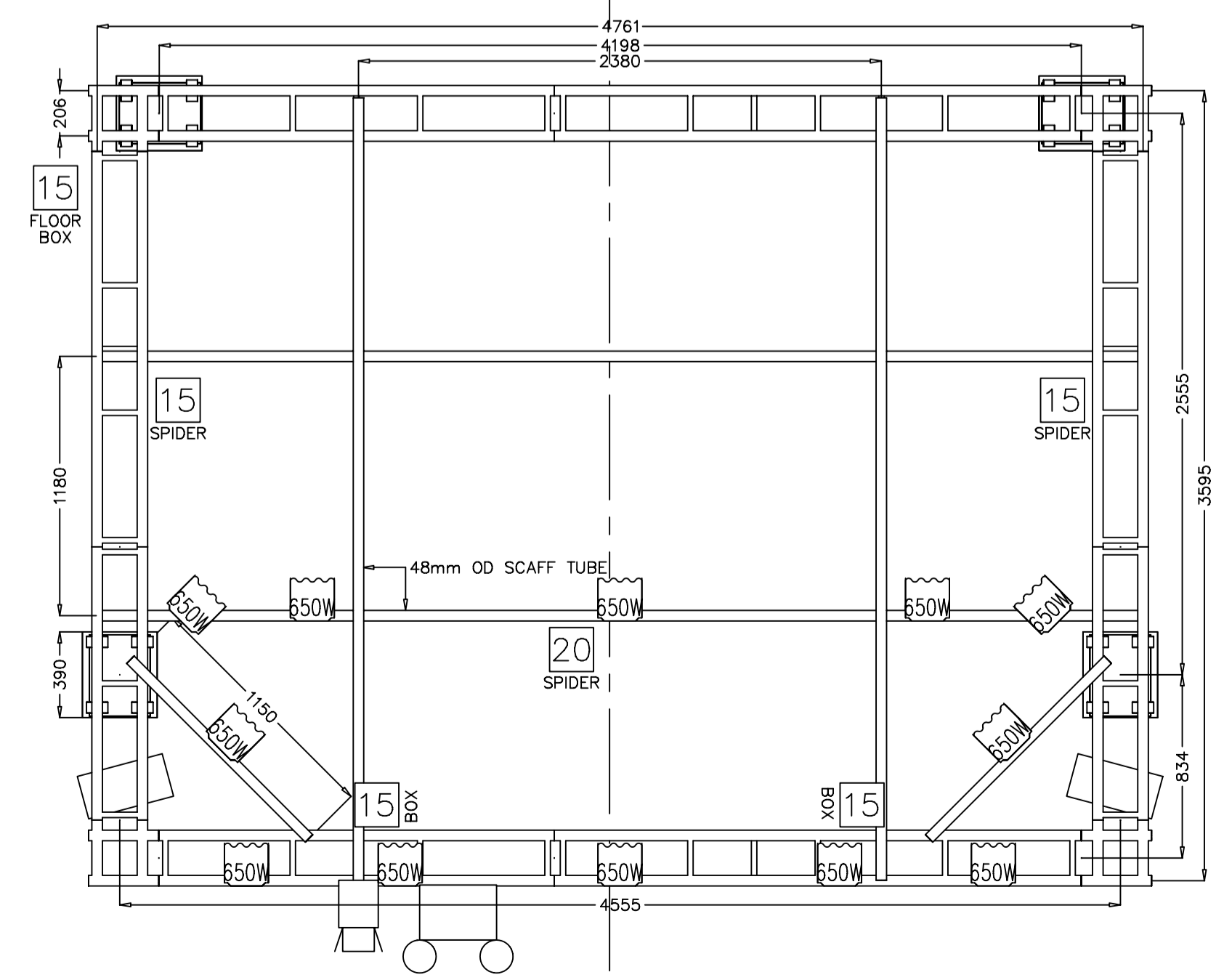
SECTION ON B-B



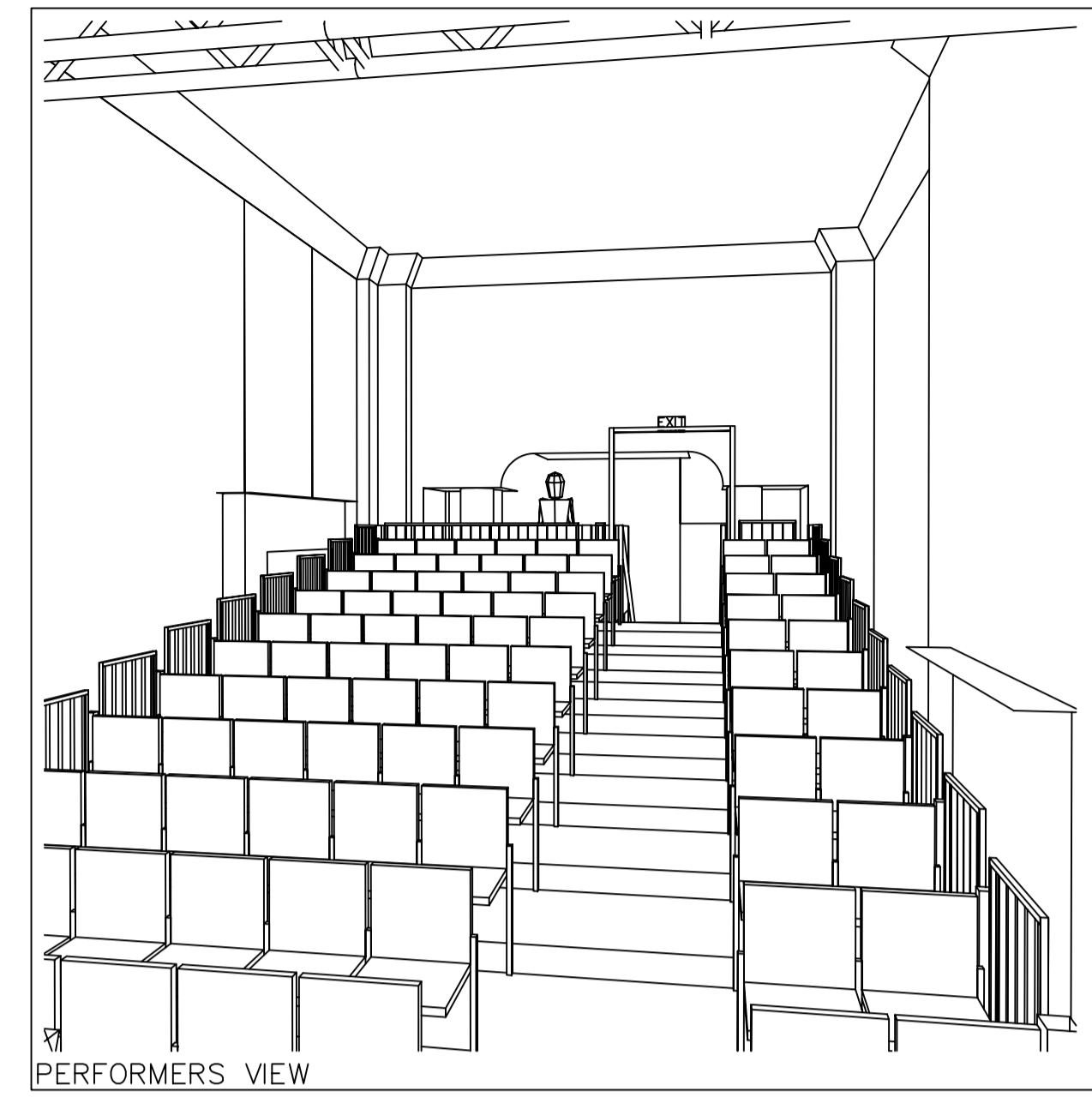
SECTION ON C-C



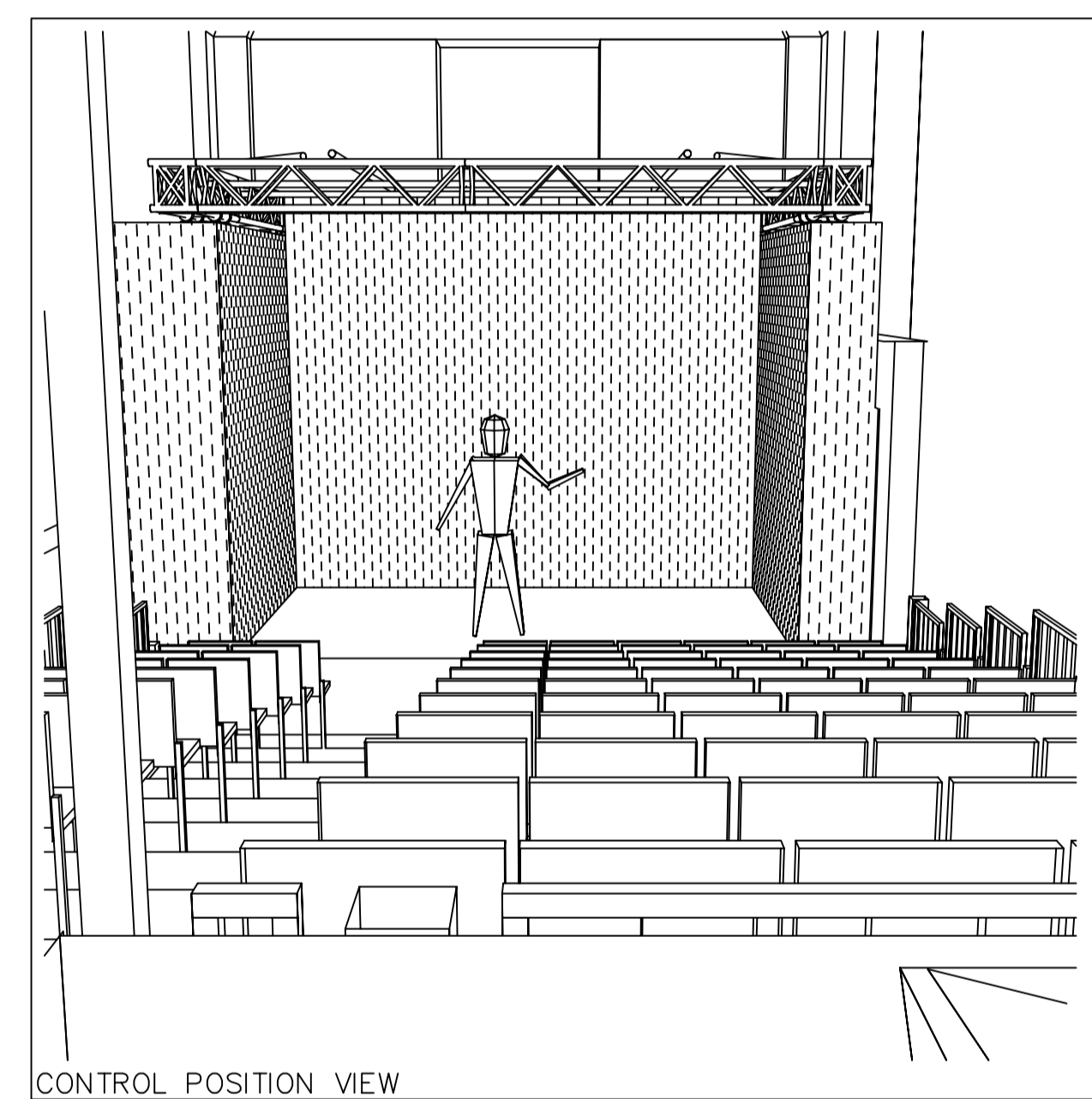
TRUSS ARRANGEMENT (ISOMETRIC VIEW)



TRUSS & FIXED LIGHTING ARRANGEMENT (1:25 SCALE)



PERFORMERS VIEW



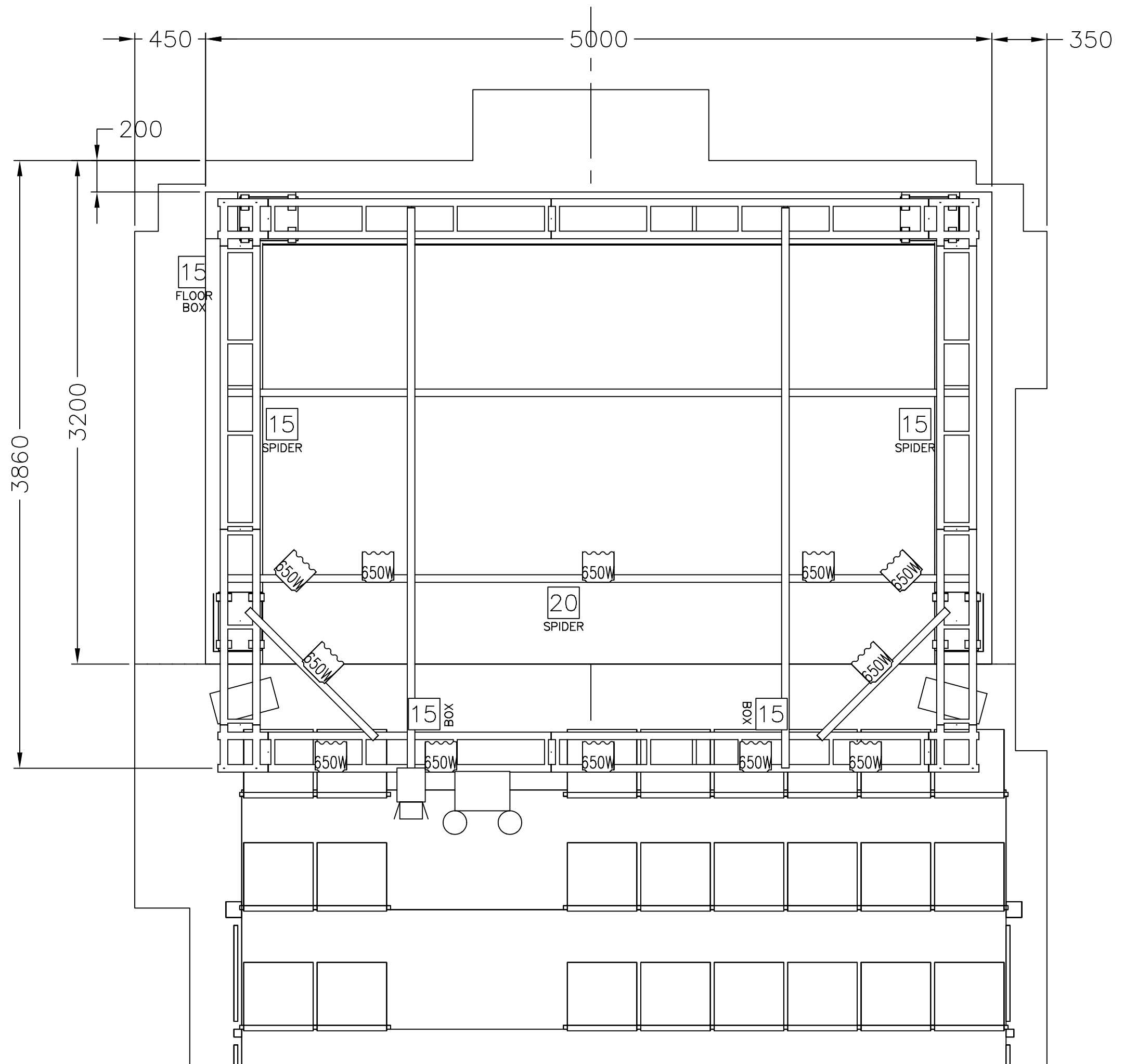
CONTROL POSITION VIEW

- EMERGENCY LIGHTING TWIN UNIT
- EMERGENCY EXIT SIGN
- 650W FRESNEL
- AISLE LIGHT

Notes:
 LIGHTING GRID:
 CONSTRUCTED FROM SLICK MINI-BEAM.
 POWER:
 63A 1P+N+E FROM BEHIND DOOR MARKED 'X'.
 SEATING:
 88 SEATS POSITIONED WHERE INDICATED.
 CONTROL POSITION AT REAR UNDER ARCH.
 ALL AISLES OF 1100mm UNLESS OTHERWISE INDICATED.
 SEATING TIER RISE OF 250mm
 SEATING TIER DEPTH OF 762mm
 HAND RAILS AT 1100mm

Issue	Date	Revision Notes	By
INFORMATION			
Client ASSEMBLY PRODUCTIONS			
Project EDINBURGH ASSEMBLY ROOMS			
Venue DRAWING ROOM			
Drawing Title GENERAL LAYOUT			
Drawing Number AR/DR/1001			Revision -
Drawn GMP	Designed AS EXG		
Checked	Scale 1:50		Date 30/08/00

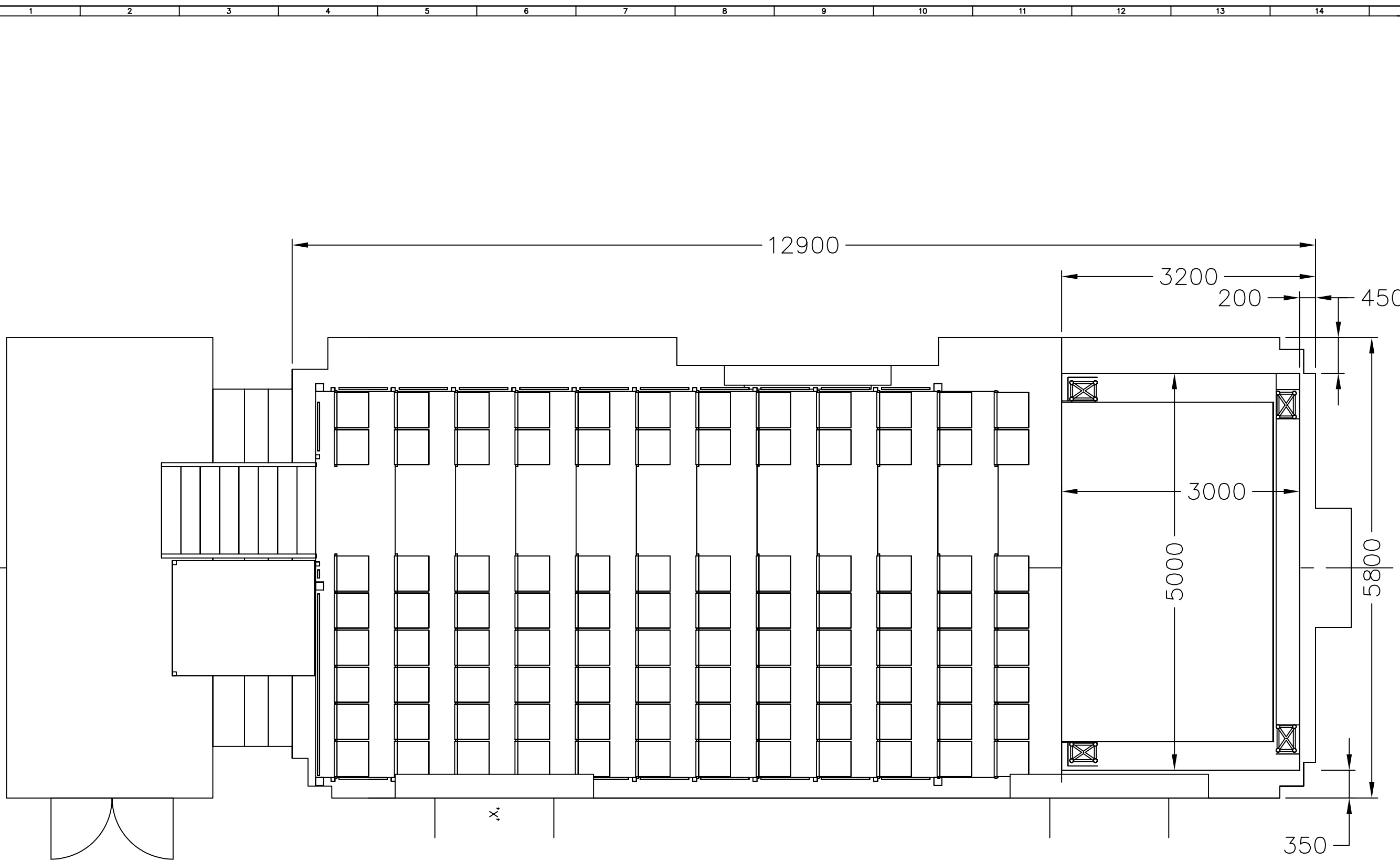
STAGE ELECTRICS
 Third Way, Avonmouth, Bristol, BS11 9YL
 Tel: (0117) 982 7282 Fax: (0117) 916 2828
 THIS DRAWING IS PROTECTED BY COPYRIGHT. THE DESIGN OF ANY ARTICLES REFERRED TO IN THIS DRAWING IS PROTECTED BY DESIGN RIGHT AND THE INFORMATION CONTAINED IN THIS DRAWING IS CONFIDENTIAL. THIS DRAWING MAY NOT BE REPRODUCED WITHOUT PERMISSION.
www.stage-electrics.co.uk



- EMERGENCY LIGHTING TWIN UNIT
- EMERGENCY EXIT SIGN
- 650W FRESNEL
- AISLE LIGHT

Notes:
 LIGHTING GRID:
 CONSTRUCTED FROM SLICK MINI-BEAM.
 POWER:
 63A 3P+N+E
 SEATING:
 88 SEATS POSITIONED WHERE INDICATED.
 CONTROL POSITION AT REAR UNDER ARCH.
 ALL AISLES OF 1100mm UNLESS OTHERWISE INDICATED.
 SEATING TIER RISE OF 250mm
 SEATING TIER DEPTH OF 762mm
 HAND RAILS AT 1100mm

Issue Date	Revision Notes	By
INFORMATION		
Client: ASSEMBLY PRODUCTIONS		
Project: EDINBURGH ASSEMBLY ROOMS		
Venue: DRAWING ROOM		
Drawing Title: STAGE LAYOUT		
Layout Name: FIXED LIGHTING		
Drawing Number: AR/DR/1002	Revision: -	
Drawn: GMP	Designed: -	
Checked:	Scale: 1:25	Date: 19/07/02



- EMERGENCY LIGHTING TWIN UNIT
- EMERGENCY EXIT SIGN
- 650W FRESNEL
- AISLE LIGHT

Notes:
 LIGHTING GRID:
 CONSTRUCTED FROM SLICK MINI-BEAM.
 POWER:
 63A 3P+N+E FROM DOOR MARKED 'X'
 SEATING:
 88 SEATS POSITIONED WHERE INDICATED.
 CONTROL POSITION AT REAR UNDER ARCH.
 ALL AISLES OF 1100mm UNLESS OTHERWISE INDICATED.
 SEATING TIER RISE OF 250mm
 SEATING TIER DEPTH OF 762mm
 HAND RAILS AT 1100mm

Issue Date	Revision Notes	By
INFORMATION		
Client ASSEMBLY PRODUCTIONS		
Project EDINBURGH ASSEMBLY ROOMS		
Venue DRAWING ROOM		
Drawing Title VENUE LAYOUT		
Layout Name STAGE PLAN		
Drawing Number AR/DR/1003	Revision -	
Drawn GMP	Designed -	
Checked	Scale 1:25	Date 19/07/02